



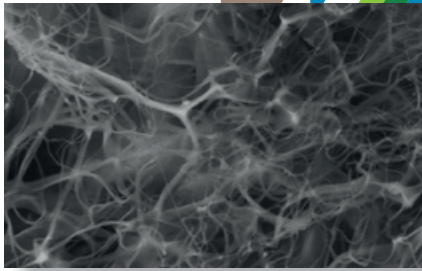
**BiOTECK**<sup>®</sup>

**XC**<sup>®</sup> DENTAL

Tissue regeneration  
Three-dimensional  
collagenic matrix  
**Xenomatrix**<sup>®</sup>

# Xenomatrix® for a faster regeneration of soft tissues

## A special three-dimensional matrix



SEM observation (Scanning Electron Microscope) allows to highlight the dense network of collagen fibers which characterizes the **Xenomatrix®** three-dimensional matrix.  
University of Padua, CUGAS Service Center

**Xenomatrix®** is a special three-dimensional collagen matrix obtained from equine Achilles tendon through an advanced biochemical process. A matrix completely biocompatible that acts as an ideal scaffold for the growth of connective tissue cells. **Xenomatrix®**, while protecting the underlying graft from the connective invasion, creates a substrate that is soon colonized by soft tissue, accelerating healing. Low healing times decrease the patient's discomfort and the possibility of post-operative infections that put the overall success of the intervention at risk. Optimal soft tissues healing for best aesthetic results.

## Superior surgical treatments

**Xenomatrix®** is indicated in all those conditions where to easing the regeneration of soft tissue is synonymous with success. A first application consists in the treatment of the post-extractive socket.

Soft tissue healing is histologically identical to that observed when the flap is left to heal by secondary intention, but it occurs on average faster. **Xenomatrix®** also acts as a barrier protecting the bone graft by creating the best conditions for bone regeneration and, therefore, for an effective socket preservation.



*Bilateral case. Comparison between healing by secondary intention (top) and healing with BCG-XC10 (bottom) after 21 days. Within the same timeframe, healing with **Xenomatrix®** is at a much more advanced stage.*  
Courtesy of Dr. Alessando Leonida - Milan

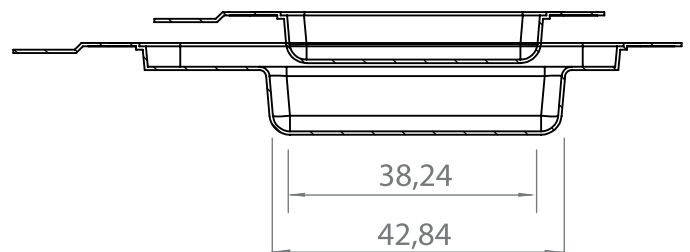


*After 4 months from the operation we can appreciate how the application of the three-dimensional matrix BCG-XC50 has allowed a full coverage of the gingival recession.*  
Courtesy of Dr. Giacomo Tarquini - Rome

A second application is the treatment of **gingival recessions**, where **Xenomatrix®** allows the creation of a substrate conducive to the re-growth of soft tissues: thus avoiding the graft of connective tissue from the palate, decreasing the surgical risk and side effects for the patient, achieving an excellent aesthetic result.

## Maximum safety combined with maximum ease of use

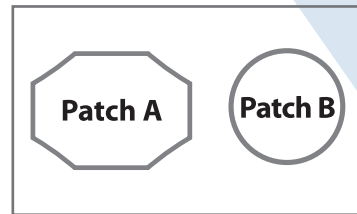
All versions of **Xenomatrix®** are supplied in a **double sterile blister** that allows a completely aseptic manipulation of the matrix when introduced into the operating field: **the maximum safety combined with maximum ease of use.**



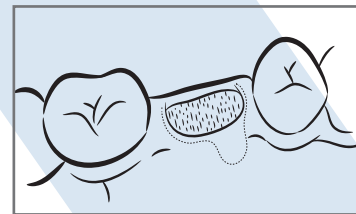
## application technique



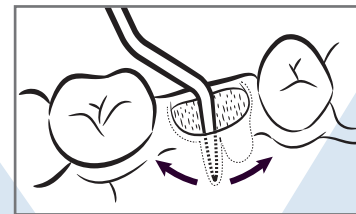
Xenomatrix® - BCG-XC10



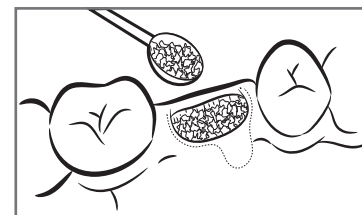
Xenomatrix® comes in two patches, A and B



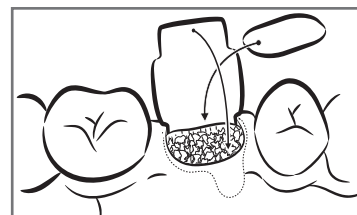
Post-extractive socket



Elevate the flap around the socket



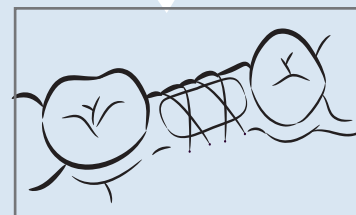
Insert the granules



a) Pack one of the short sides of patch A under the flap  
b) Place patch B on top of the graft



Pack the other sides of the patch A under the flap, covering the patch B

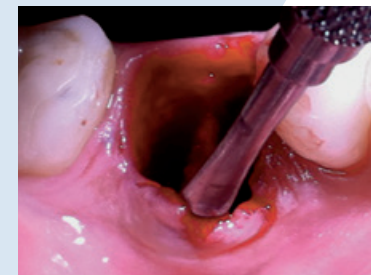


Stabilize with one or two cross stitches

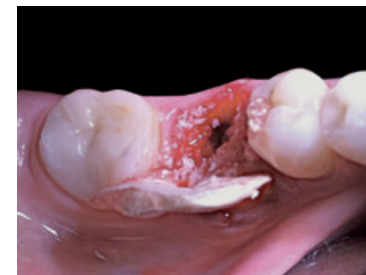
## surgical application



Post-extractive socket



Flap elevation with papilla preservation



Bone graft and patch A are put in place



Cross-stitch - The matrix is exposed



Healing after 7 days



Healing after 3 months



Final prosthetic abutment



Final crown

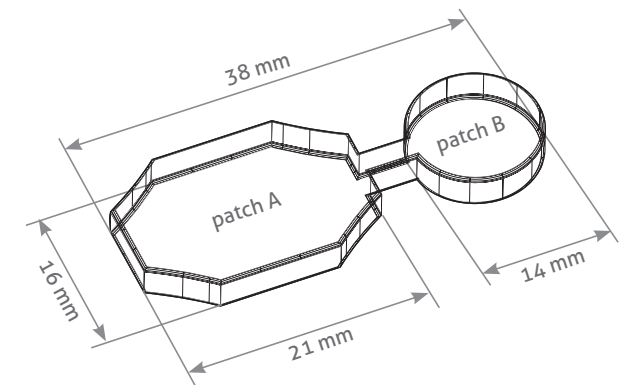
Surgical technique applied and developed by Dr. Alessandro Leonida, DDS, PhD.

## solutions

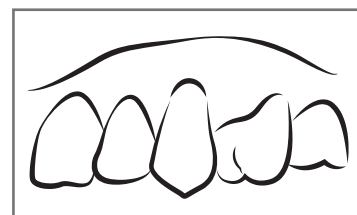


### Xenomatrix® Collagenic Matrix

BCG-XC10 Collagen Xenomatrix®  
1pc  
38x16x4/ø14x4mm



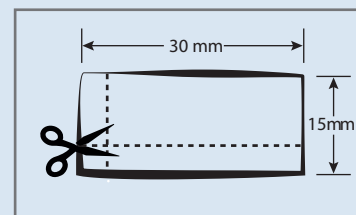
Xenomatrix® - BCG-XC50



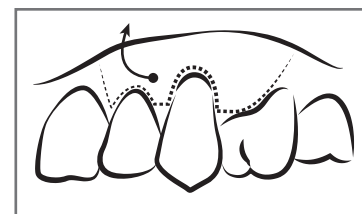
Gingival recessions - Class I and II according to Miller



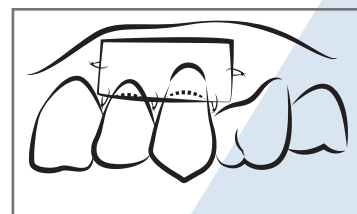
Identify the maximum level of radicular coverage obtainable



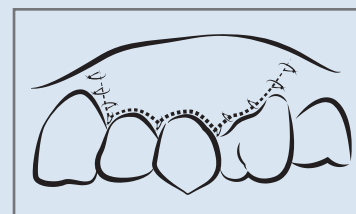
If necessary, cut out the matrix based on the number of the dental elements involved and to the extent of defect to be corrected



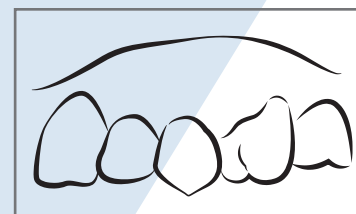
Variable thickness trapezoidal flap elevation



Place the matrix at the level of the cementoamel junction (CEJ). Fix the matrix with horizontal mattress absorbable sutures and detached stitches at the base of anatomic papillae



Position the flap coronally about 1 mm from the CEJ and fix it with sling suture and detached stitches



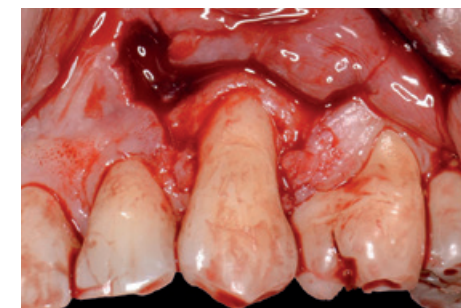
Full coating of gingival recessions



Gingival recession - Class I and II according to Miller



The exposed root portion is carefully polished with the utmost care to avoid damaging nearby marginal tissues



Modified coronal sliding flap; it is critical to obtain a passive positioning



Positioning of the BCG-XC50 three-dimensional matrix at the level of the cementoamel junction (CEJ). Suturing to the receiving bed by means of absorbable stitches

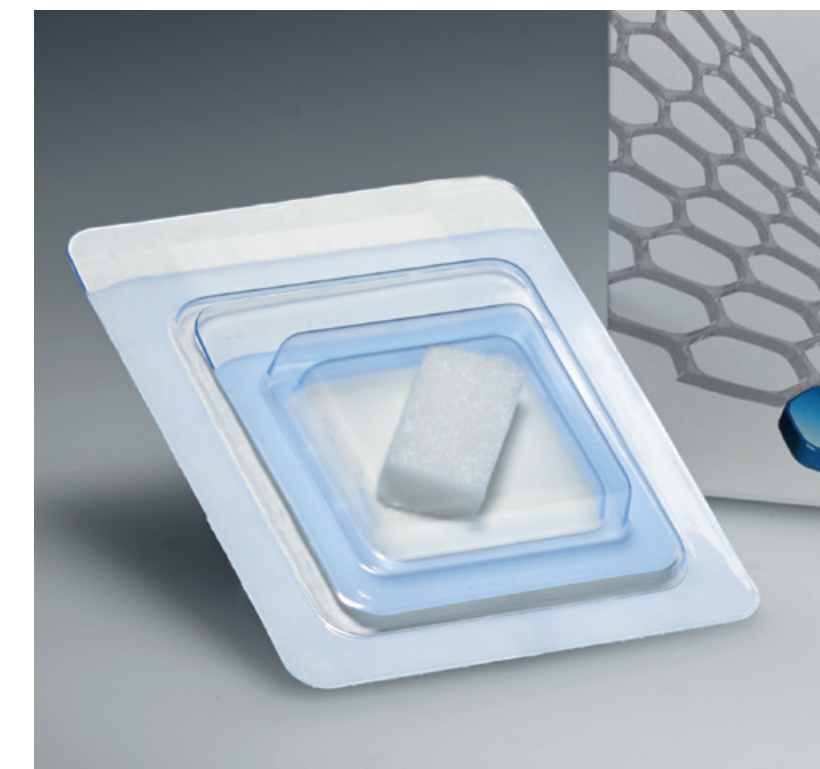


Suture of the flap with detached and sling stitches; it is essential to perform a tension-free suture



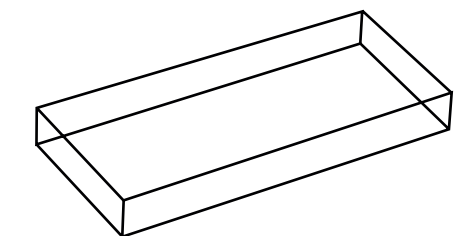
Healing at 4 months. A complete root coverage and an increase in thickness of the keratinized tissue is observed

Surgical technique applied and developed by Dr. Giacomo Tarquini, DDS.



### Xenomatrix® Collagenic Matrix

BCG-XC50 Collagen Xenomatrix®  
1 pc 15 x 30 x 4 mm





## BIOTECK®. INNOVATE BIOMATERIALS.

**Bioteck®** is an Italian company that has been producing bone substitutes and protective membranes successfully used in orthopaedics, neurosurgery and oro-maxillo facial surgery since 1995.

Scientific research and innovation are the guiding principles that have enabled **Bioteck®** to patent new production processes and to create unique biomaterials of high quality in terms of performance level and safety guarantees. Materials now used in 72 countries worldwide.

At its multi-functional centre for research and development and thanks to state-of-the-art production processes, every day **Bioteck®** works to pursue its key objective: to innovate biomaterials.

[WWW.BIOTECK.COM](http://WWW.BIOTECK.COM)



## BIOTECK ACADEMY. SCIENTIFIC COMMUNITY FOR THE CULTURE OF THE CONSCIOUS CHOICE.

**Bioteck Academy** is the innovative and unique scientific community which promotes the circulation and sharing of knowledge in the field of tissue regeneration applied to dentistry, maxillo-facial surgery, orthopaedics and neurosurgery.

Established as a hub for the clinical and scientific expertise focussed on by **Bioteck®** spanning twenty years of research, today it is an entity open to all professionals who decide to join and share their own surgical experience.

[WWW.BIOTECKACADEMY.COM](http://WWW.BIOTECKACADEMY.COM)



### Bioteck S.p.A.

#### Legal and Administrative Headquarters

Via E. Fermi, 49 – 36057  
Arcugnano (VI) – Italia  
Tel: +39 0444 289366  
Fax: +39 0444 285272

#### Multi-functional Production, Research and Development Centre

Via G. Agnelli, 3 – 10020  
Riva presso Chieri (TO) – Italia  
Tel: +39 0444 289366  
Fax: +39 0444 285272

Xenomatrix® is distributed by:

